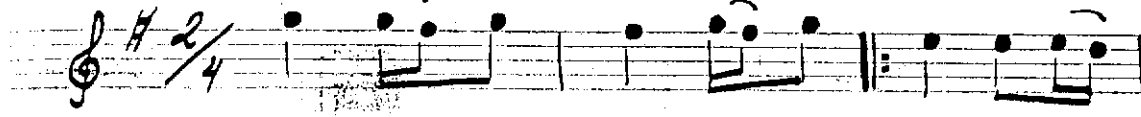


USULÜ

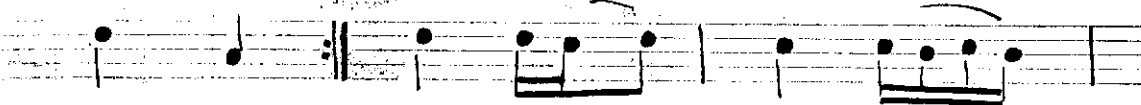
MAKAMI
kale den aleye

BESTEKÂRI
malatya

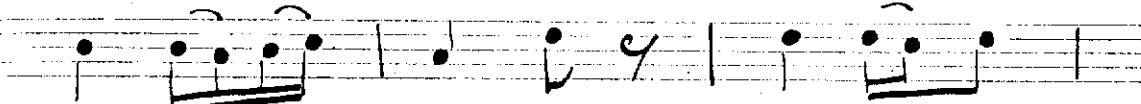
ka le den ka le ye şa hin u



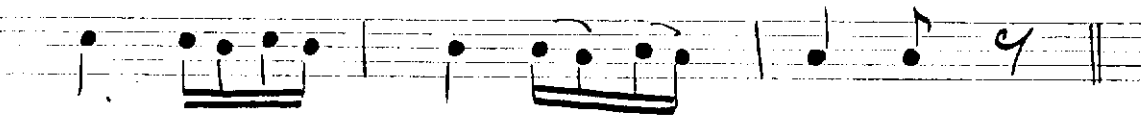
çur dum a hi le va hi le



gü nüm ge çir dim a hi le



va hi le gü nüm ge çir dim



pare seker ezdim ser het i'istoldim

Öylolur löylolur tükmen güzeli

Eolur has olur tükmen geline

kale den aleye taş ben olaydım

ela göz üstüne kaş ben olaydım

o yarın bastığı taş ben olaydım.